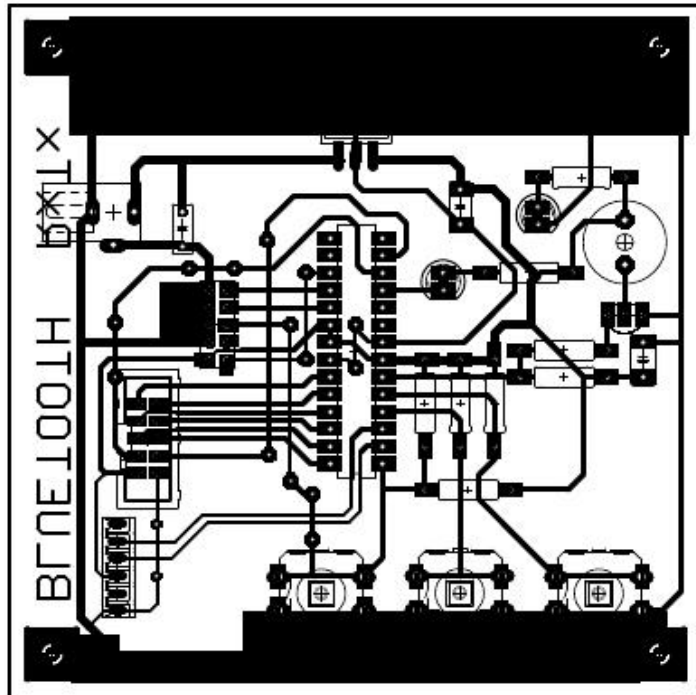
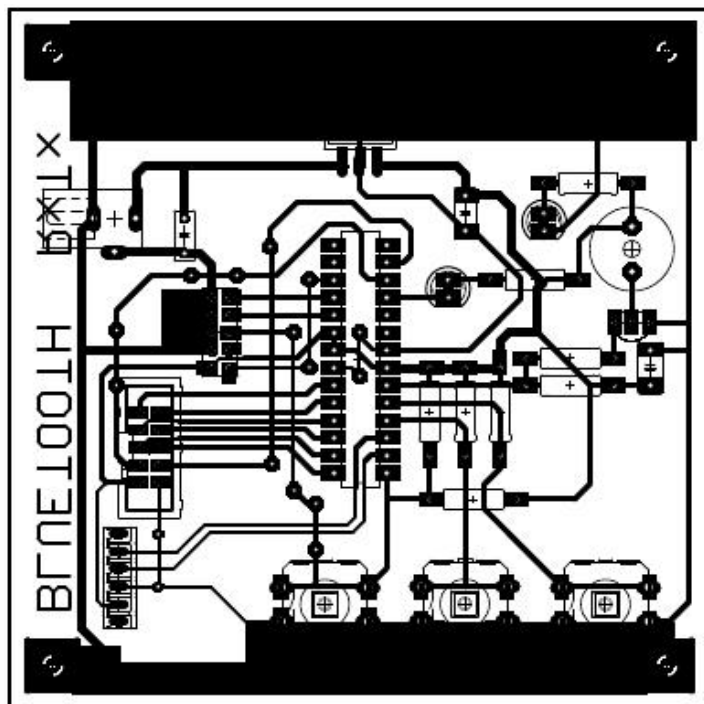


Lampiran 1 Gambar Pcb

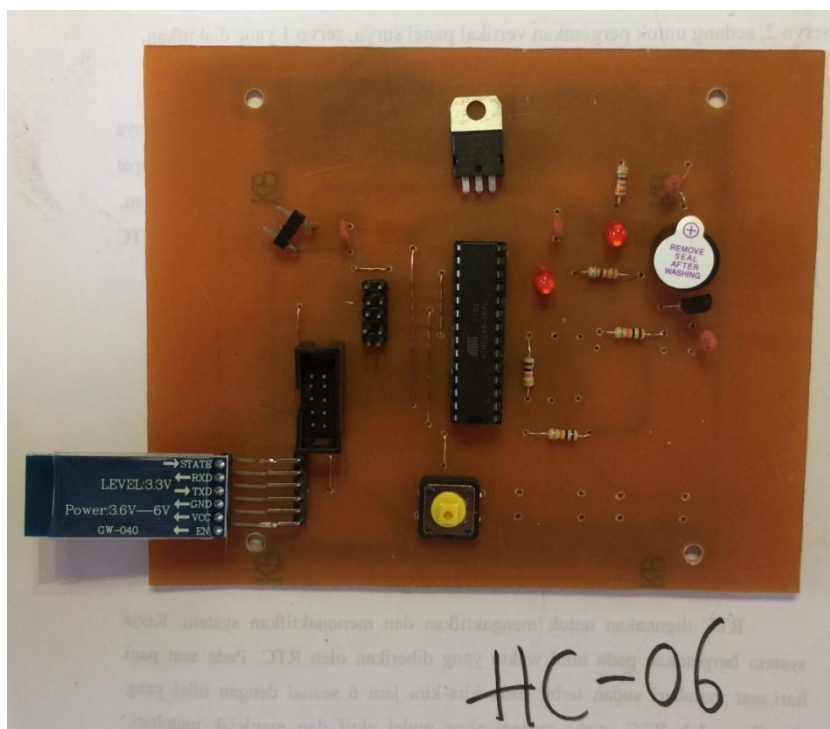
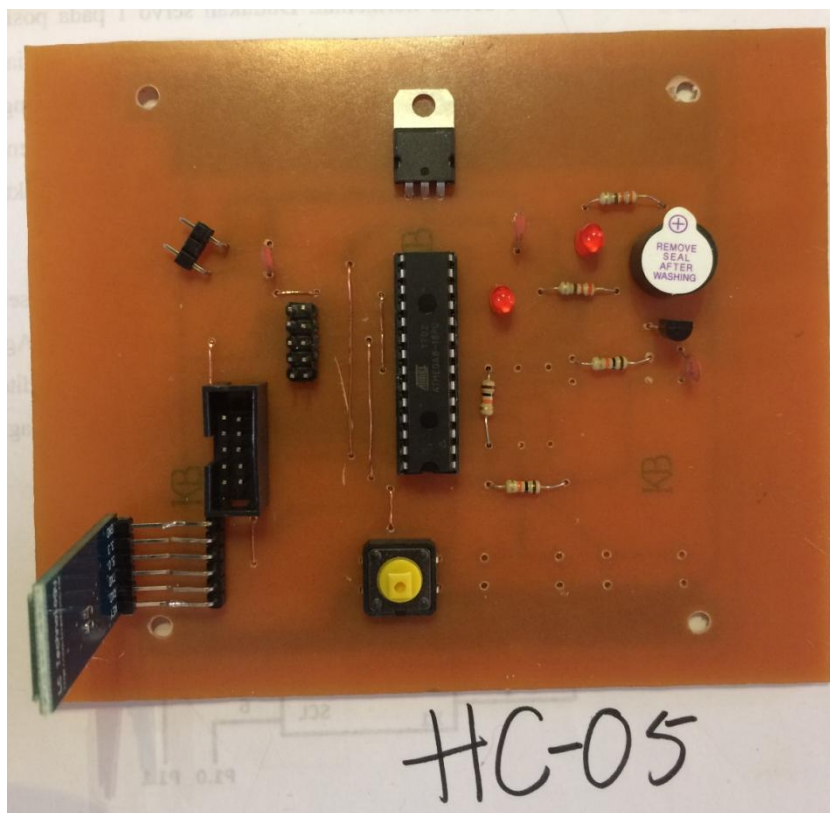
Bluetooth HC-05



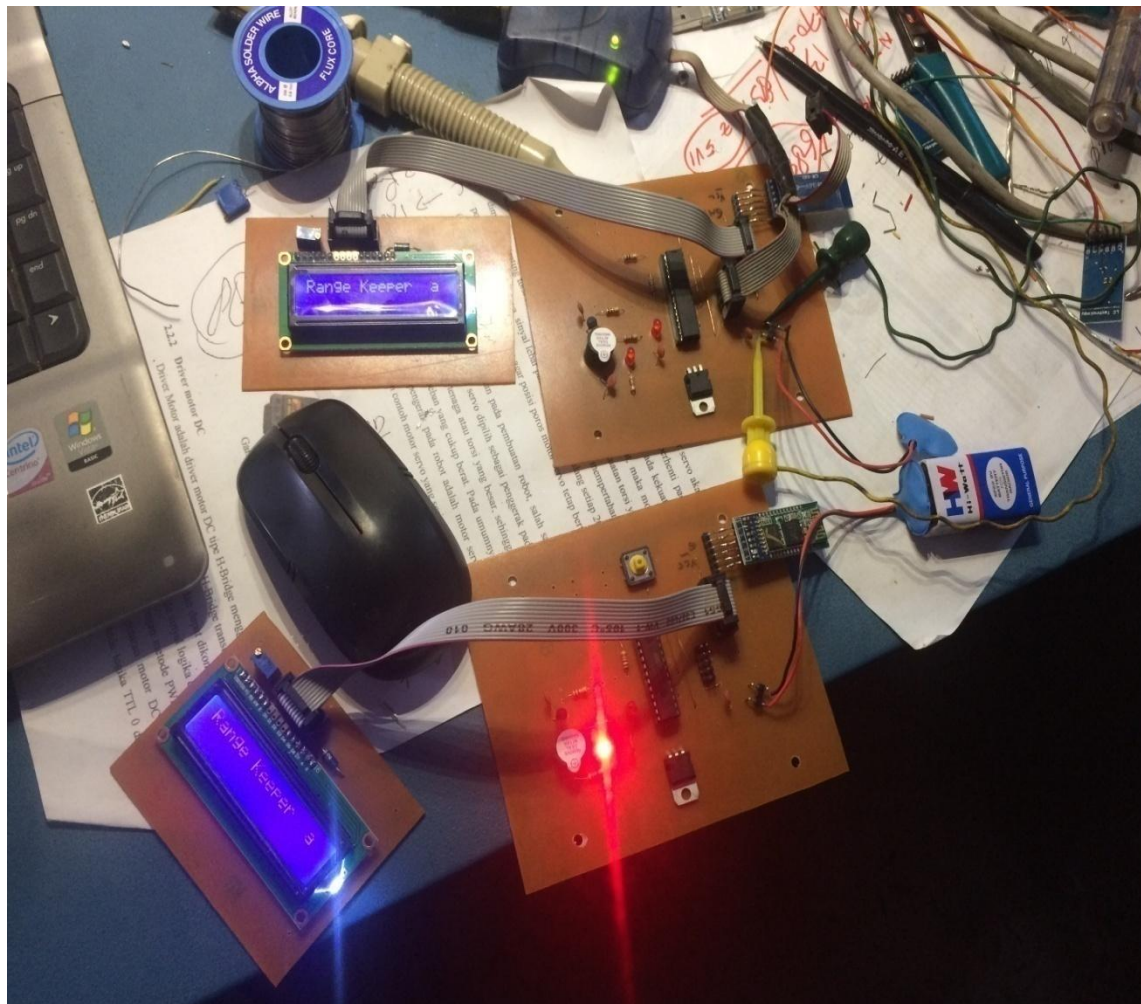
Bluetooth HC-06



Lampiran 2 Gambar Rangkaian Keseluruhan Bluetooth HC-05 dan Bluetooth HC-06



Lampiran 3 Uji coba alat



Lampiran 4 Program

```
#include <mega8.h>
#include <stdio.h>
#include <delay.h>

// Alphanumeric LCD functions
#include <alcd.h>
#define BUZ PORTD.4
#define LED PORTD.5

// Place your code here
sens++;
if (sens > 50) sens = 50;
    lcd_gotoxy(14,0);
sprintf(buf,"%02",sens);
    lcd_puts(buf);
    delay_ms(250);
}

// Place your code here
sens--;
if (sens < 5) sens = 5;
    lcd_gotoxy(14,0);
sprintf(buf,"%02",sens);
    lcd_puts(buf);
    delay_ms(250);
}
```

```

// Reinitialize Timer1 value
TCNT1H=0x85EE >> 8;
TCNT1L=0x85EE & 0xff;
// Place your code here
idx++;
if (sts == 1) BUZ = ! BUZ;
if (idx > 1) BUZ = 0;
if (idx > 3) idx = 0;
if (sts == 0) BUZ = 0;
    LED =! LED;
}
// Global enable interrupts
#asm("sei")
lcd_gotoxy(0,0);
lcd_putsf("Range Keeper");

sdt = ' ';
cnt = 0;
sts = 0;

if (sens > 100) sens = 25;

while (1)
{
    // Place your code here
    putchar('!');

    delay_ms(250);
    if (rx_counter > 0)

```

```
    {  
sdt = getchar();  
    lcd_gotoxy(14,0);  
    sprintf(buf,"%c.",sdt);  
    lcd_puts(buf);  
  
if (sdt == '!')  
    {  
sts = 0;;  
cnt = 0;  
    lcd_gotoxy(0,1);  
    lcd_putsf("zona 10 meter ");  
    rx_counter = 0;  
    }  
    }  
  
cnt++;  
if (cnt > sens)  
    {  
cnt = 30;  
sts = 1;  
    lcd_gotoxy(0,1);  
    lcd_putsf("Out of range..!!");  
    }
```