

Lampiran 1

Daftar Perusahaan yang Menjadi Sampel

No	Kode	Nama Perusahaan	Kriteria Pemilihan Sampel			Sampel
			1	2	3	
1	MBTO	PT. Mustika Ratu Tbk	✓	✓	X	-
2	AUTO	PT. Astra Auto Part Tbk.	✓	✓	✓	1
3	LION	PT. Lion Metal Works Tbk	✓	X	X	-
4	GDYR	PT. Malindo FeedmillTbk.	✓	✓	✓	2
5	KRAH	PT. Grand Cartech Tbk	✓	✓	X	-
6	NIPS	PT. Nipress Tbk	✓	X	X	-
7	KRAS	PT. Krakatau Steel Tbk	✓	✓	✓	3
8	PRAS	PT. Prima alloy steel Universal Tbk	✓	✓	X	-
9	IMAS	PT. Indomobil Sukses International Tbk	✓	✓	X	-
10	POLY	PT. Asia Pasific Fibers Tbk	✓	✓	✓	4
11	IKBI	PT. Sumi Indo Kabel Tbk	✓	✓	X	-
12	GJTL	PT. Gajah Tungal Tbk	✓	✓	X	-
13	PBRX	PT. Pan Brothers Tbk	✓	✓	✓	5
14	TKIM	PT. Pabrik Kertas Tjiwi Kimia Tbk	✓	✓	✓	6
15	FASW	PT. Fajar Surya Wisesa Tbk	✓	✓	✓	7
16	AISA	PT. Tiga Pilar Sejahtera Food Tbk	✓	✓	X	-
17	SIPD	PT. Sierad Produce Tbk	✓	✓	✓	8
18	HMSP	PT. Hanjaya Mandala Sempurna Tbk .	✓	✓	✓	9
19	PTSN	PT. Sat Nusapersada Tbk.	✓	✓	✓	10
20	KIAS	PT. Keramika Indonesia Assosiasi Tbk	✓	✓	✓	11
21	MYOR	PT. Mayora Indah Tbk.	✓	✓	X	-
22	UNSP	PT. Nippon Indosari Corpindo Tbk	✓	✓	✓	12
23	GGRM	PT. Gudang Garam Tbk	✓	✓	✓	13
24	ULTJ	PT. Ultra Milk Industryand Trading Company Tbk	✓	✓	X	-
25	STTP	PT. Siantar Top Tbk	✓	✓	X	-
26	MERK	PT Merck Tbk	✓	✓	X	-
27	INAF	PT. Indo Farma Tbk	✓	✓	X	-
28	TPIA	PT. Chandra Asri Petrochemical Tbk	✓	✓	✓	14
29	TCID	PT. Mandom Indonesia Tbk	✓	✓	✓	15

30	ALKA	PT. Alaska Industrindo Tbk	✓	✓	X	-
31	ALMI	PT. Alumindo Light Metal Industry Tbk	✓	✓	X	-
32	BRPT	PT. Barito Pasific Tbk	✓	X	X	-
33	CPIN	PT. Charoen Pokhpand Indonesia Tbk	✓	X	X	-
34	JECC	PT. Jembo Cable Company Tbk.	✓	✓	✓	16
35	ICBP	PT. Indofood CBP Sukses Makmur Tbk.	✓	✓	✓	17
36	UNVR	PT. Unilever Indonesia Tbk.	✓	✓	✓	18

Lampiran 2

Data Pengungkapan CSR sampel perusahaan 2010-2013

No	Nama Perusahaan	CSR			
		2010	2011	2012	2013
1.	PT. Astra Auto Part Tbk.	1	1	1	1
2.	PT. Malindo FeedmillTbk.	0	0	0	0
3.	PT. Asia Pasific Fibers Tbk	1	1	1	1
4.	PT. Krakatau Steel Tbk	1	1	1	1
5.	PT. Pan Brothers Tbk	1	1	1	1
6.	PT. Pabrik Kertas Tjiwi Kimia Tbk	1	1	1	1
7.	PT. Fajar Surya Wisesa Tbk	1	1	1	1
8.	PT.Sierad Produce Tbk	1	1	1	1
9.	PT. Hanjaya Mandala Sempurna Tbk .	1	1	1	1
10.	PT. Sat Nusapersada bk.	0	0	1	1
11.	PT. Keramika Indonesia Assosiasi Tbk	0	0	0	0
12.	PT. Nippon Indosari Corpindo Tbk	0	0	0	1
13.	PT. Gudang Garam Tbk	0	1	1	1
14.	PT. Chandra Asri Petrochemical Tbk	1	1	1	1
15.	PT. Mandom Indonesia Tbk	0	0	1	1
16.	PT. Jembo Cable Company Tbk	0	1	1	1
17.	PT. Indofood CBP Sukses Makmur Tbk.	1	1	1	1
18.	PT. Unilever Indonesia Tbk.	1	1	1	1

Lampiran 3

Data Nilai Perusahaan(Tobin's Q) perusahaan sampel 2012-2013

No	Nama Perusahaan	Nilai Perusahaan			
		2010	2011	2012	2013
1.	PT. Astra Auto Part Tbk.	1.1456	1.1411	1.1347	1.1269
2.	PT. Malindo FeedmillTbk.	1.1411	1.0951	1.0791	1.0766
3.	PT. Asia Pasific Fibers Tbk	1.0566	1.0597	1.0513	1.0539
4.	PT. Krakatau Steel Tbk	1.1173	1.1190	1.2051	1.1185
5.	PT. Pan Brothers Tbk	1.1026	1.1208	1.0997	1.1060
6.	PT. Pabrik Kertas Tjiwi Kimia Tbk	1.1066	1.1078	1.1083	1.0993
7.	PT. Fajar Surya Wisesa Tbk	1.0962	1.0888	1.0992	1.0972
8.	PT.Sierad Produce Tbk	1.1102	1.1111	1.1121	1.1132
9.	PT. Hanjaya Mandala Sempurna Tbk .	1.1185	1.1172	1.1136	1.1143
10.	PT. Sat Nusapersada bk.	1.1363	1.1417	1.1363	1.1474
11.	PT. Keramika Indonesia Assosiasi Tbk	1.1070	1.1305	1.2236	1.2912
12.	PT. Nippon Indosari Corpindo Tbk	1.0997	1.0978	1.0716	1.0817
13.	PT. Gudang Garam Tbk	1.1001	1.1490	1.0967	1.1057
14.	PT. Chandra Asri Petrochemical Tbk	1.1304	1.1268	1.1194	1.1222
15.	PT. Mandom Indonesia Tbk	1.1217	1.1435	1.1435	1.1261
16.	PT. Jembo Cable Company Tbk	1.1031	1.1048	1.1032	1.1004
17.	PT. Indofood CBP Sukses Makmur Tbk.	1.1120	1.1128	1.1040	1.0990
18.	PT. Unilever Indonesia Tbk.	1.0597	1.0597	1.0602	1.0624

Lampiran 4

Data Kualitas Audit perusahaan sampel 2012-2013

No	Nama Perusahaan	Kualitas Audit			
		2010	2011	2012	2013
1.	PT. Astra Auto Part Tbk.	1	1	1	1
2.	PT. Malindo Feedmill Tbk.	0	0	0	0
3.	PT. Asia Pasific Fibers Tbk	0	0	0	0
4.	PT. Krakatau Steel Tbk	1	1	1	1
5.	PT. Pan Brothers Tbk	0	0	0	0
6.	PT. Pabrik Kertas Tjiwi Kimia Tbk	0	0	0	0
7.	PT. Fajar Surya Wisesa Tbk	1	1	1	1
8.	PT. Sierad Produce Tbk	0	0	0	0
9.	PT. Hanjaya Mandala Sempurna Tbk .	1	1	1	1
10.	PT. Sat Nusapersada bk.	0	0	0	0
11.	PT. Keramika Indonesia Assosiasi Tbk	0	0	0	0
12.	PT. Nippon Indosari Corpindo Tbk	1	1	1	1
13.	PT. Gudang Garam Tbk	1	1	1	1
14.	PT. Chandra Asri Petrochemical Tbk	1	1	1	1
15.	PT. Mandom Indonesia Tbk	1	1	1	1
16.	PT. Jembo Cable Company Tbk	0	0	0	0
17.	PT. Indofood CBP Sukses Makmur Tbk.	1	1	1	1
18.	PT. Unilever Indonesia Tbk.	1	1	1	1

Lampiran 5

Data Profitabilitas (ROA) perusahaan sampel 2012-2013

No	Nama Perusahaan	Profitabilitas			
		2010	2011	2012	2013
1.	PT. Astra Auto Part Tbk.	1.0282	1.0340	1.0372	1.0435
2.	PT. Malindo FeedmillTbk.	1.0297	1.0329	1.0314	1.0386
3.	PT. Asia Pasific Fibers Tbk	1.0426	1.0590	1.0436	1.0426
4.	PT. Krakatau Steel Tbk	1.0450	1.0583	1.0702	1.0693
5.	PT. Pan Brothers Tbk	1.0530	1.0519	1.0546	1.0513
6.	PT. Pabrik Kertas Tjiwi Kimia Tbk	1.0588	1.0564	1.0614	1.0624
7.	PT. Fajar Surya Wisesa Tbk	1.0501	1.0576	1.0662	1.0690
8.	PT.Sierad Produce Tbk	1.0557	1.0630	1.0647	1.0655
9.	PT. Hanjaya Mandala Sempurna Tbk .	1.0216	1.0176	1.0189	1.0184
10.	PT. Sat Nusapersada bk.	1.0723	1.0720	1.0623	1.0595
11.	PT. Keramika Indonesia Assosiasi Tbk	1.0615	1.0713	1.0546	1.0546
12.	PT. Nippon Indosari Corpindo Tbk	1.0307	1.0330	1.0365	1.0422
13.	PT. Gudang Garam Tbk	1.0348	1.0361	1.0403	1.0423
14.	PT. Chandra Asri Petrochemical Tbk	1.0352	1.0645	1.0150	1.0642
15.	PT. Mandom Indonesia Tbk	1.0363	1.0365	1.0371	1.0386
16.	PT. Jembo Cable Company Tbk	1.0756	1.0507	1.0513	1.0595
17.	PT. Indofood CBP Sukses Makmur Tbk.	1.0349	1.0350	1.0360	1.0392
18.	PT. Unilever Indonesia Tbk.	1.0185	1.0183	1.0181	1.0181

Lampiran 6

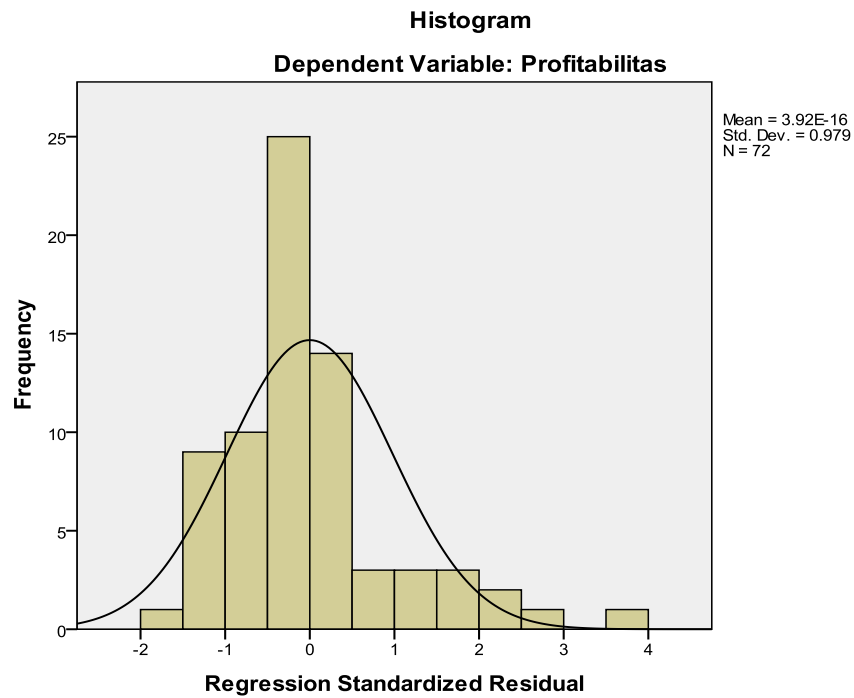
Statistik Deskriptif Variabel-Variabel Penelitian

Descriptive Statistics

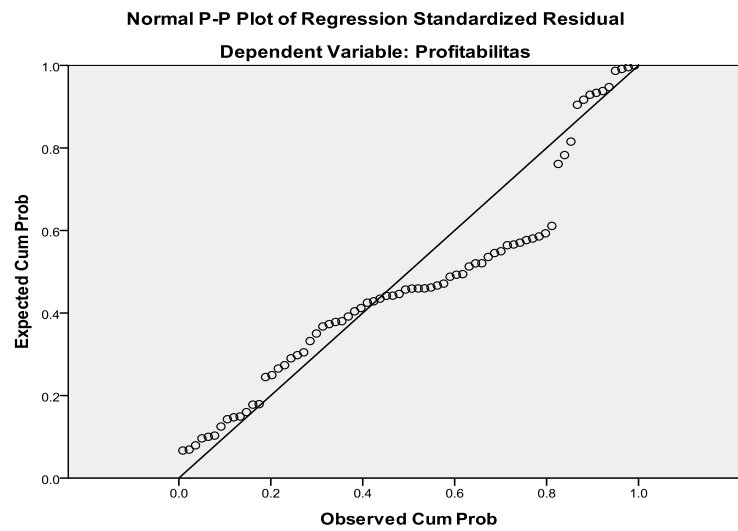
	N	Range	Minimum	Maximum	Mean	Std. Deviation
CSR	72	1	0	1	.76	.428
Nilai_Perusahaan	72	367.92	1.79	369.71	95.8158	77.17831
Kualitas_Audit	72	1	0	1	.56	.500
Profitabilitas	72	51.60	.10	51.70	10.9606	12.47283
Valid N (listwise)	72					

Lampiran 7

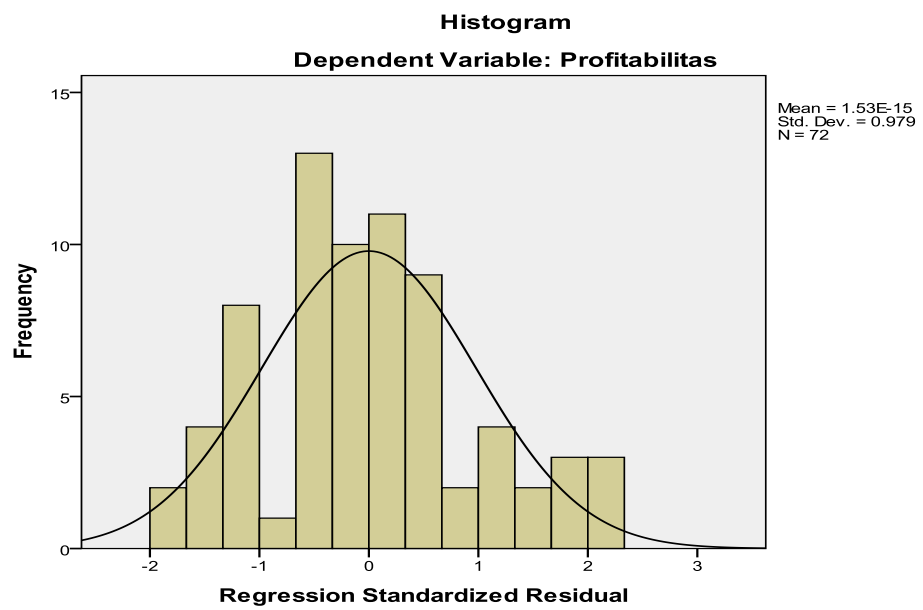
Uji Normalitas (1) : Histogram Sebelum Transformasi



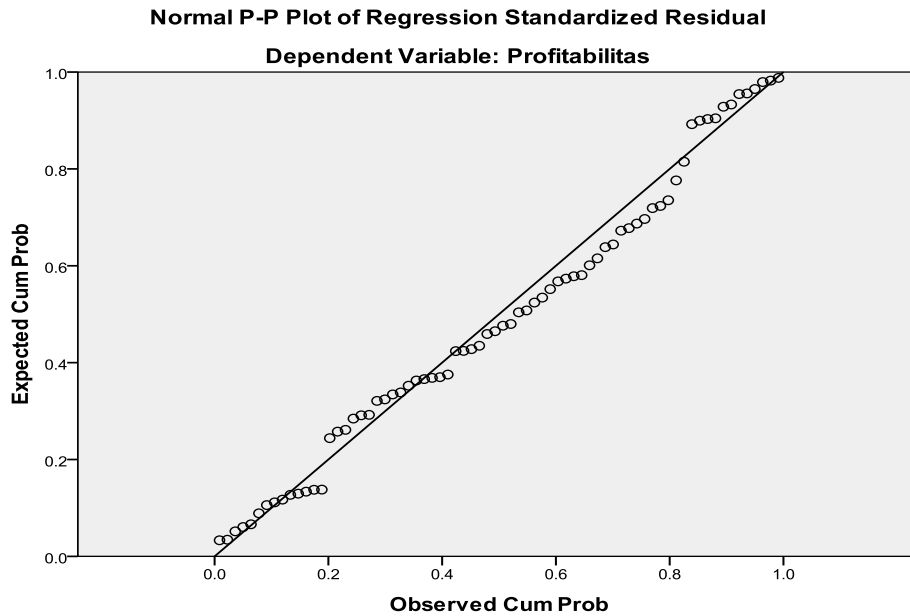
Uji Normalitas (2) : Grafik Normal PP Plot Sebelum Transformasi



Histogram (setelah data di transformasi)



Grafik Normal P-Plot (setelah data di transformasi)



Hasil Uji Normalitas Sebelum Data Ditransformasi

One-Sample Kolmogorov-Smirnov Test

		Profitabilitas
N		72
Normal Parameters ^{a,b}	Mean	10.9606
	Std. Deviation	12.47283
Most Extreme Differences	Absolute	.192
	Positive	.190
	Negative	-.192
Kolmogorov-Smirnov Z		1.629
Asymp. Sig. (2-tailed)		.010

a. Test distribution is Normal.

b. Calculated from data.

Hasil Uji Normalitas Setelah Data di Transformasi

One-Sample Kolmogorov-Smirnov Test

		Profitabilitas
N		72
Normal Parameters ^{a,b}	Mean	1.045985
	Std. Deviation	.0163833
Most Extreme Differences	Absolute	.089
	Positive	.078
	Negative	-.089
Kolmogorov-Smirnov Z		.756
Asymp. Sig. (2-tailed)		.617

a. Test distribution is Normal.

b. Calculated from data.

Hasil Uji Multikolinearitas

Coefficients^a

Model		Unstandardized Coefficients		Standardized Coefficients	t	Sig.	Collinearity Statistics	
		B	Std. Error	Beta			Tolerance	VIF
1	(Constant)	.926	.051		18.016	.000		
	CSR	.005	.004	.134	1.272	.208	.902	1.108
	Nilai_Perusahaan	.113	.046	.255	2.481	.016	.951	1.052
	Kualitas_Audit	-.017	.003	-.526	-5.118	.000	.948	1.055

Hasil Uji Heteroskedastisitas

Coefficients^a

Model		Unstandardized Coefficients		Standardized Coefficients	t	Sig.
		B	Std. Error	Beta		
1	(Constant)	8.626E-5	.000		.727	.470
	CSR	-4.357E-5	.000	-.080	-.645	.521
	Nilai_perusahaan	.001	.001	.085	.704	.484
	Kualitas_Audit	.000	.000	.239	1.981	.052

a. Dependent Variable: LnEI_2

Table Uji Autokorelasi

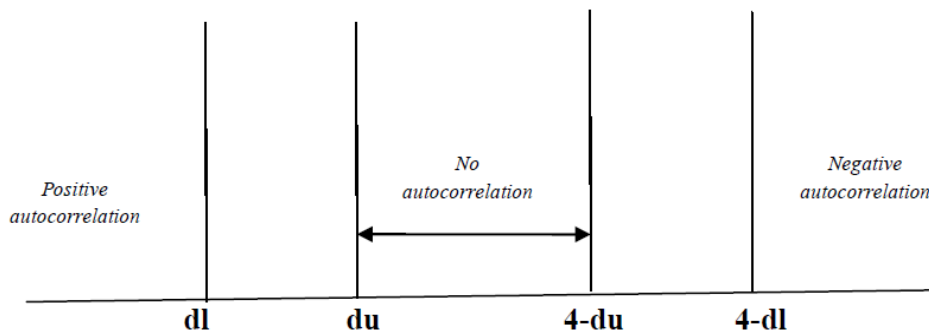
Model Summary^b

Model	R	R Square	Adjusted R Square	Std. Error of the Estimate	Durbin-Watson
1	.566 ^a	.320	.290	.0138055	1.876

a. Predictors: (Constant), Kualitas_Audit, Nilai_Perusahaan, CSR

b. Dependent Variable: Profitabilitas

Gambar Daerah Penerimaan Pada Uji Durbin_Watson



1.5205 1.7015 1.876

Lampiran 8

Analisis Regresi Linear Berganda

Coefficients^a

Model		Unstandardized Coefficients		Standardized	t	Sig.
		B	Std. Error	Coefficients Beta		
1	(Constant)	.926	.051		18.016	.000
	CSR	.005	.004	.134	1.272	.208
	Nilai_Perusahaan	.113	.046	.255	2.481	.016
	Kualitas_Audit	-.017	.003	-.526	-5.118	.000

a. Dependent Variable: Profitabilitas

Analisis Koefisien Korelasi dan Koefisien Determinasi

Model Summary^b

Model	R	R Square	Adjusted R Square	Std. Error of the Estimate	Durbin-Watson
1	.566 ^a	.320	.290	.0138055	1.876

a. Predictors: (Constant), Kualitas_Audit, Nilai_Perusahaan, CSR

b. Dependent Variable: Profitabilitas